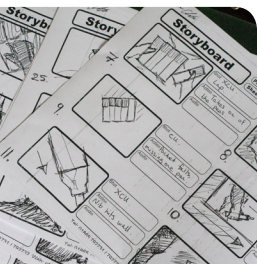
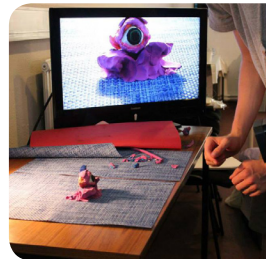


# Oxfordshire Sector Profile

## Creative and Digital



# Contents

<b>Foreword</b>	<b>3</b>
<b>Executive Summary</b>	<b>4</b>
<b>Introduction</b>	<b>5</b>
<b>Creative and Digital</b>	<b>6</b>
<b>Research and Development</b>	<b>11</b>
<b>Education and Skills</b>	<b>13</b>
<b>Population and Profile</b>	<b>14</b>
<b>Sites and Premises</b>	<b>15</b>
<b>Connectivity</b>	<b>16</b>
<b>Business Support</b>	<b>18</b>

---

**This is one of a series of five Oxfordshire Sector Profiles.**

- Automotive and Motorsport
- Creative and Digital
- Electronics and Sensors
- Life Sciences
- Space Technologies

Please visit [www.investinoxfordshire.com](http://www.investinoxfordshire.com) for more information.

---

# Foreword



**Nigel Tipple**  
 CEO Oxfordshire  
 Local Enterprise  
 Partnership

Oxfordshire is renowned across the globe for its academic excellence, innovative business culture and quality of the built and natural environment. We have Europe's largest concentration of multi-million pound science research facilities, underpinning our leading position in advanced engineering, manufacturing and life sciences, in addition to being at the heart of the UK's growing international space cluster.

With one of the strongest economies nationally driving a GVA output of £19.2bn annually, Oxfordshire is one of only three areas that positively contribute to the Exchequer.

World leading research and innovation sits at the heart of our success - the use and application of knowledge is a key feature – indeed the county was recently cited as the most innovative in the country.

Our success is driven by a number of distinctive features:

- Two leading universities - the University of Oxford is rated one of the best in the world and Oxford Brookes is one of the top performing modern universities nationally.
- We are home to an internationally significant group of large science and research facilities including Harwell Campus (home to the Rutherford Appleton Laboratory, Diamond Light Source and the gateway to the UK space sector – where the newly established European Space Agency sits alongside the Satellite Applications Catapult Centre) and the UK Atomic Energy Authority Culham Centre for Fusion Energy - home to the UK's national fusion research laboratory.
- The area is also home to globally recognised companies like MINI Plant Oxford, Oxfam, Oxford University Press, Siemens, Oxford Instruments and more.
- We have a highly skilled workforce; 49% are graduates and we have the lowest rate of residents with no qualifications and the lowest Jobseeker's Allowance claimant count nationally.

We are primed for investment with solid economic foundations and a strong ambition to create 85,000 new jobs by 2030. Our integrated approach, driving 'economic growth through innovation', presents government and business with a compelling case for investment.



# Executive Summary

NESTA ranks Oxfordshire as one of the UK's top 10 creativity and innovation hotspots

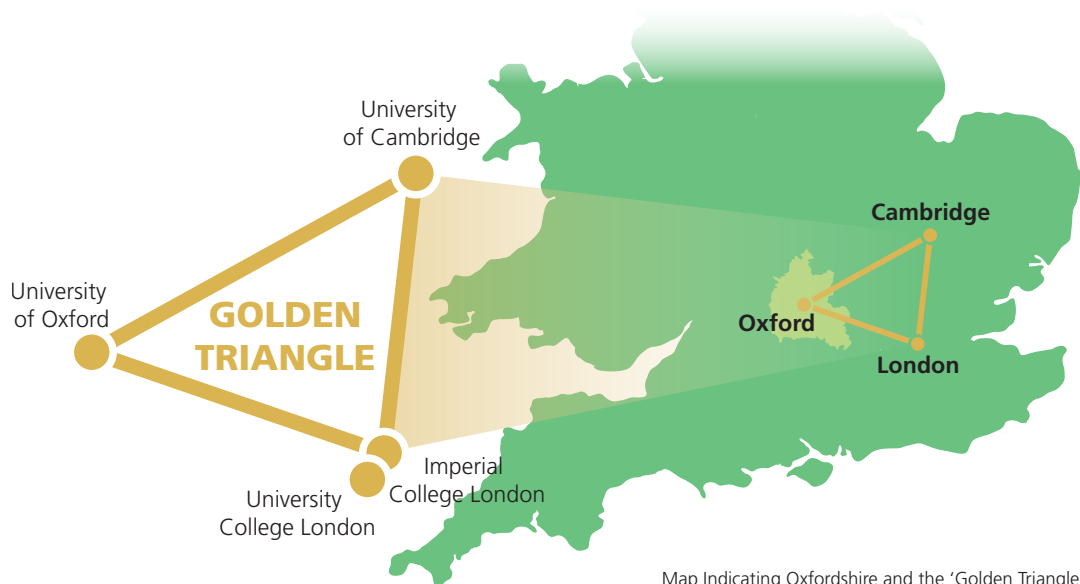
- **Creative and Digital industries are a significant force in Oxfordshire**, strengthened by world class universities and sector specific skills, big industry names, a very active start-up scene driven by students from two universities and the wider technology entrepreneurship community.
- **More than 27,000 are employed in the digital industry in Oxfordshire** supporting approximately 4,700 enterprises who generate more than £1.4bn annually for Oxfordshire's economy.
- **Oxfordshire has the largest centre of publishing in the UK outside of London, with over 280 publishing businesses providing over 6,000 jobs.** We have significant digital strengths in computer games, software development, cybersecurity, Big Data, high performance computing and capabilities in television and film, broadcast and production and sound.
- **A track record in establishing and attracting leading creative and digital companies.** Major names in the area spanning a wide spectrum of digital capability include Sophos, Nominet, Oxford University Press, Elsevier, and Natural Motion. Some major players grew from university spin-outs – a key trend in the industry which offers significant collaborative opportunities.
- **NESTA ranks Oxfordshire as one of the UK's top 10 creativity and innovation hotspots.** A diverse base of global and indigenous digital companies combined with an ecosystem of support organisations and R&D infrastructure enables joint collaborations and networking.
- **Digital companies in Oxfordshire can benefit from being in a location with world leading R&D academic expertise.** World renowned research institutions offer facilities for researchers such as the Advanced Research Computing (ARC) facility and the UK's most powerful GPU-based supercomputer, Emerald.
- **The University of Oxford is ranked No 1 in the UK for its research power.** The University of Oxford is also ranked third in the world for computer science. Oxford Brookes University's Centre for Publishing Studies is one of the leading institutes for publishing education in the world.
- **With its excellent motorway, rail and airport links, Oxfordshire is an ideal location from which to access national and international clients and markets.** Frequent and direct train services puts London only 56 minutes away. Heathrow Airport is an hour's drive from Oxford.
- **A SuperConnected city.** As part of the government's SuperConnected Cities Programme, Oxford is rolling out its programme to enable superfast broadband for everyone, everywhere in Oxford.



# Introduction

Oxfordshire has a world class base of R&D facilities and expertise including the University of Oxford, rated No. 1 in the UK for its research excellence

- Oxfordshire is part of the UK's 'Golden Triangle'. This triangle is formed by the University of Oxford, the University of Cambridge, and the universities based in London (including Imperial College London and University College London). The universities within the 'Golden Triangle' have a combined annual research income of over £1.4bn.
- Located midway between London and Birmingham, Oxfordshire has excellent connectivity to the UK's motorway network including access to the M4 / M40 corridor and the M25, putting the rest of the country within easy reach. There is an average of five direct train services an hour to London from Oxford's main station (journey time of 56 minutes) and additional new services via Oxford Parkway. Heathrow Airport is just an hour's drive away and Birmingham International a similar distance.
- Oxfordshire has strengths in a number of sectors including: digital (particularly in cyber security, Big Data, publishing and gaming), medical technologies and medical devices, automotive and Formula 1, space related technologies and electronics.
- Oxfordshire has a strong track record in attracting foreign direct investment (FDI), with global companies including: Sharp, Toshiba, Siemens, BMW, Lockheed Martin, Thales Alenia, CQR Consulting and Rhea Group.
- Companies locating to Oxfordshire are supported by a collaborative base of partners. This includes industry networks, as well as outstanding research organisations including the University of Oxford and Oxford Brookes University.
- In addition to the Universities, Oxfordshire has world class scientific centres including the UK's national laboratory for fusion research, Culham Centre for Fusion Energy, and the UK's most powerful GPU-based supercomputer, Emerald.



Map Indicating Oxfordshire and the 'Golden Triangle'



# Creative and Digital

Establishing a creative and digital business in Oxfordshire will ensure access to a considerable labour pool with the necessary skills.

- Tech Nation 2015 estimates that there are 22,000 people within digital employment in Oxfordshire. Major companies operating in this sector include Sophos, CQR, Nominet, Natural Motion, Vicon and Rebellion. Overall, there are around 4,700 creative and digital sector businesses which have been estimated to generate more than £1.4bn annually.
- Oxford is internationally recognisable as a film and TV location, with a number of production and post production companies. Oxfordshire has a wealth of performing arts venues and world renowned museums such as The Ashmolean, the world's first university museum, and the University of Oxford Museum of Natural History.

Oxfordshire has a digital industry worth £500mn and a strong employee base in publishing activities and computer programming related activity



## Number and Proportion of Employment, by Selected Sectors and Sub-sectors, 2014

Selected Industries by Standard Industry Classification (2 digit)	Oxfordshire No.	Oxfordshire %	England %
58 : Publishing activities	6,000	2.0	0.5
59 : Motion picture, video and television programme production, sound recording and music publishing activities	600	0.2	0.3
62 : Computer programming, consultancy and related activities	7,900	2.3	2.2
63 : Information service activities	1,000	0.3	0.2
72 : Scientific research and development	6,100	1.8	0.4
74 : Other professional, scientific and technical activities	2,500	0.7	0.6
90 : Creative arts and entertainment activities	500	0.2	0.3



## DIGITAL GAMING

Oxfordshire is home to an international gaming hub with stand out successes and a thriving start-up scene.

The UK gaming industry is estimated to be worth £1.7bn, with the strongest growth in digital

- Globally, it is expected that the gaming industry will reach revenues of \$100bn by 2018 with much of the growth driven by the mobile and digital market.
- NESTA has recently estimated that games development and publishing contributes c£1.7bn to the UK economy. With a base of 1,900 companies Oxford is one of 12 Gaming Hubs identified, with a stronger presence in consoles (Nesta 2014 - A Map of the UK's games industry).
- Oxfordshire also boasts a strong offering in mobile games development. Mobile games are the driver of innovation in the smart phone industry and the most successful category in the apps economy.
- Oxfordshire is at the forefront of developing technologies which encourage innovation and new ways of working across the creative sector. Key technologies include motion capture and mobile app development. Companies include Audiomotion Studios, Europe's largest motion capture studio, and Vicon who are involved in cutting edge motion capture technology.

### Natural Motion

- Natural Motion is a leading games and technology company based in Oxford, London, Brighton and San Francisco. They create and publish free to play games which have included Backbreaker Football, My Horse (downloaded 11 million times), CSR Racing and the hugely successful Clumsy Ninja. The company has also provided software for such games as Grand Theft Auto IV and animation services for Hollywood blockbusters, including the Lord of the Rings trilogy.
- Founded in 2001 as an Oxford University spin-out (following zoology research into developing computer simulations of nervous systems), it received help from university tech transfer company, Isis Innovation. Natural Motion has recently been acquired by social network gaming company Zynga for \$527m and now employs 300 people, of which 150 are based in Oxford.

## Rebellion

- Rebellion are one of Europe's largest independent game developers. Using its own state of the art cross-platform engine and toolset, it has had twenty-four No.1 hit games such as Sniper Elite, Aliens vs. Predator, Rogue Trooper and Star Wars Battlefront. Their games have won critical acclaim and were nominated for five British BAFTA awards.
- Established in 1992 by brothers Jason and Chris Kingsley, Rebellion was founded in Oxford following both brothers' having studied at the University of Oxford. With estimated revenues of around £15million, the company now employs around 200 people.
- Rebellion also has a publishing arm, focusing on science fiction and fantasy stories called Abaddon Books and Solaris Books. It publishes the 2000AD comic weekly and the monthly Judge Dredd magazine.
- Rebellion collaborates with the nearby University of Oxford; in particular with regards to hiring graduates and enabling training to include programming skills needed to make games.







## CYBER SECURITY

Cyber security has been identified as one of the top four risks to national security and is estimated to be worth £3.4bn to the UK economy by 2017

Oxfordshire has nationally significant strengths in cyber security, with key players such as Sophos headquartered in the area.

- **The University of Oxford has considerable research expertise in cyber security.** It is one of only eight UK universities to be nationally designated as a University Cyber Centre of Excellence.
- **Sophos** is a major developer and vendor of computer security software and hardware, providing communication endpoint, encryption, security and Unified Threat Management products. A global company, its products help secure the networks used by 100 million people and 100,000 businesses in 150 countries.
- **Nominet** is the world's third largest internet registry company. Based at Oxford Science Park, they manage the .uk domain space and are expanding into the running of other domain name registries. Established in 1996, they employ 130 people in Oxford and have an annual turnover of around £27million.
- **The RHEA Group** is Belgium's premier supplier of systems engineering services and software solutions to the aerospace, defence and security markets. Top clients include the European Space Agency, EUMETSAT, EU, Airbus DS, CERN and many others.

### CQR, Oxford

- CQR is an independent provider of information security services, delivering these services globally. Founded in 2003 by information security professionals who previously worked for multinational corporations, they have grown rapidly and now have offices in Australia and the US.
- CQR offers its clients penetration testing/ethical hacking which is used to simulate an intrusion into an IT system with the intention of identifying security vulnerabilities. They also offer PCI DSS compliancy, services to design or assist in developing a robust security management framework and resiliency services such as business continuity and disaster recovery.
- CQR set up their European HQ in Oxford in 2009. The company chose Oxford as it offered an excellent location given its access to a superb calibre of university graduate output and the opportunities to collaborate and tailor graduate skills in their niche area.
- CQR now employ six staff and are actively recruiting in Oxfordshire. Its success was recently recognised winning the Milton Park Small Business Award at the West Oxfordshire Business Awards and they were also finalists in the Oxfordshire Business Awards.

*"Being located in Oxfordshire as a science and technology hub provides many benefits such as commercial business, networking opportunities and access to the universities. We are able to recruit a high calibre of graduate and have plans to engage with the university to support studies so that they are of even more direct relevance to our niche market. Oxfordshire is an exciting place to be in the cyber security business with world leading research expertise such as The Global Cyber Security Capacity Centre on our doorstep."*

**Greg Inge, Managing Director, CQR**

## SOFTWARE DEVELOPMENT AND BIG DATA

The University of Oxford has a long tradition of computer science expertise - one of its most famous alumni is Professor Tim Berners-Lee, the inventor of the World Wide Web.

It is forecasted that global spending on Big Data hardware, software and services will reach a market size of \$114bn by 2018

### Software Development

- Software development is a core strength in Oxfordshire (Tech Nation Report, 2015) with over half of the 804 software companies being focused on design and development. Other growing strengths include design into wearable technologies.

### Big Data

- The University of Oxford has several world leading research institutes in the areas of Big Data and Cybersecurity.
- The Oxford Internet Institute, founded in 2001 at the University of Oxford, is an academic centre for the study of the societal implications of the Internet.
- Employing a team of world-class scientists, engineers, social scientists and domain experts from Emirates and Oxford University, the Oxford-Emirates Data Science Lab, located at the Oxford Centre for Information (OCI), will examine new ways of forecasting demand and optimising seat inventory across the airline's global network.

## DIGITAL PUBLISHING

Oxfordshire has the largest centre of publishing in the UK outside of London and has a fast growing digital sector.

70% of Oxford University Press output is now digital

- Oxfordshire has the largest centre of publishing in the UK outside of London; it is estimated that the area has over 280 publishing businesses, providing around 4,700 jobs.
- Oxford University Press (OUP) is the largest university press in the world and the second-oldest (founded in 1586). In addition to publishing over 4,600 new books each year, OUP is a major provider of online information. 70% of its revenue now stems from electronic material. OUP has 1,800 employees based in Oxford.
- Newsquest is the UK's second largest publisher of local media in print and online. The groups titles form the backbone of a powerful network of 144 websites making up one of the UK's biggest audiences of any local news publisher in the UK.



# Research and Development

Digital companies locating in Oxfordshire, particularly those operating in the key sub-sectors of cyber security, software development, computer games, digital publishing and Big Data gain access to world leading research capabilities.

The University of Oxford's Computer Science and Information Systems department is ranked third in the world and top in Europe

## UNIVERSITY OF OXFORD

The University of Oxford has a number of research groups of relevance to companies involved in Big Data analysis or high performance computing.

- Hosted by the Oxford Martin School is the **Institute for the Future of Computing**. Its work focuses on the ubiquity and accelerating speed of computers, the massive increase of digital data, complexity of extreme computing and requirements for usable secure systems.
- Oxford is the home to one of the four newly set up £120 million national network of **Quantum Technology Hubs**. The hubs will explore the properties of quantum mechanics and how they can be harnessed for technology.
- It manages the **Advanced Research Computing (ARC)** facility which is a central resource to any university researcher who needs access to high performance computing.
- **Big Data Institute** will be directed at obtaining and characterising large datasets to improve our understanding of human disease, utilising very detailed information from large patient cohorts such as UK Biobank and to 50 million electronic patient records through the NHS.
- **Global Cyber Security Capacity Centre**'s key areas of expertise include analysis and verification of software and security protocols, systems security and cyber security, policy and governance. The centre undertakes numerous research projects with both public and private sponsors.
- **Oxford Internet Institute** established the Oxford Digital Economy Collaboration (ODEC) Group, a collaborative partnership with London's Digital Catapult, an initiative in support of developments within the digital economy in the UK. Focus is on the Internet of Things (IOT), trust, privacy and cybersecurity and societal aspects of the digital economy.

The Oxford International Centre for Publishing Studies at Oxford Brookes University is one of the leading institutes of its kind in the world

## OXFORD BROOKES UNIVERSITY

Oxford Brookes University has international expertise in research relating to digital publishing and computer gaming.

- **Department of Computing and Communication Technologies** at Oxford Brookes has research expertise with applications to the digital gaming industry. An example of a highly successful project is the complex computer software which helped create a new technology for the Sony PlayStation, for the Harry Potter gaming franchise. The department has also recently opened two new research laboratories in the Turing Building, one for each of their research centres. One of the Professors in the Department is holder of the highly acclaimed Royal Society Wolfson Research Merit Award.
- Wonderbook™ is a physical book that interacts with the PlayStation 3™ via a camera and allows the player to control the computer through natural hand gestures. The contribution from Oxford Brookes was to enable the computer to distinguish the skin of the player's hands from the background. It came as part of a Knowledge Transfer Partnership with Sony Computer Entertainment Europe.
- At Oxford Brookes, The **Oxford International Centre for Publishing Studies** is one of the leading institutes for publishing education in the world, with a reputation for innovation and excellence in teaching and research. They offer several degree courses which includes specific focus on digital content, including an MA in Digital Publishing.
- The **Cognitive Robotics Research Group** at Oxford Brookes undertakes research into human-robot interaction, autonomous vehicles and bio-inspired robotics.

## THE OXFORD TRUST



- Newly opened, the Oxford Hackspace is an initiative supported by The Oxford Trust consisting of a 3,000 sq ft maker space equipped with numerous tools, wifi, soldering irons, 3D printers, sewing machines, oscilloscopes, hand tools, game consoles, and a thriving entrepreneurial community.
- Early stage companies and entrepreneurs benefit from its specific focus on providing phased-in prototyping and small scale manufacturing equipment.

# Education and Skills

Creative specialists are particularly prevalent in Oxfordshire and account for a significant proportion of the workforce in Oxfordshire.

- In 2010/11, there were 1,935 1st and Higher Degree qualifiers in mathematical and science based subjects, representing an important source of new talent for companies seeking the necessary technical expertise in areas such as cyber security, digital gaming, Big Data and HPC.
- In addition there are c450 qualifiers in creative arts and areas such as publishing.
- The University of Oxford has one of the longest established computer science departments in the country with courses covering Pure Computer Science as well as Computational Biology, Quantum Computing, Computational Logistics, Information Systems, Software Verification and Software Engineering.
- The Faculty of Technology, Design and Environment at Oxford Brookes University incorporates the Department of Mechanical Engineering and Mathematic Sciences and the Department of Computing and Communication Technologies.
- Oxford Brookes offers courses in publishing and digital gaming, including a BSC Hons in Computer Games. Following a £150,000 government grant, the Oxfordshire Publishing Cluster Group run training courses for people in the publishing industry out of Oxford Brookes University.
- City of Oxford College offers Computer Games animation HND and other relevant courses for school leavers.
- The SAE Institute (also known as the School of Audio Engineering) is the world’s largest creative media school. Its global HQ is in Oxford and it offers several courses including a BA/BSC (Hons) in game art animation, interactive animation, games programming, visual effects animation and audio production.

**TOTAL ANNUAL**



**STUDENT Population of 43,000+ Students making it the youngest city in England and Wales**

**No. of Qualifiers by Selected Broad Subjects, University of Oxford and Oxford Brookes University**

Subject	1st Degree	Higher Degree (research)	Higher Degree (taught)
Physical Science	465	170	115
Engineering & Technology	300	85	110
Mathematical Science	235	50	105
Computer Science	125	25	150
Total	1,125	330	480

Source: HESA, 2010/11

## Professional Development

- Business Executives can access world class Continuing Professional Development .The Saïd Business School is 10th in the world in the combined ranking of the Executive Education programmes compiled by the Financial Times (2015).

# Population & Profile

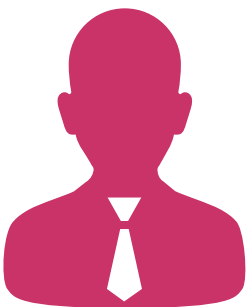
With a considerable pool of highly qualified employees with professional and technical skills and expertise; Oxfordshire provides an ideal location for a wide spectrum of creative and digital companies and R&D related operations.

- Situated within the UK's most densely populated region, the South East, Oxfordshire has a large population, estimated at nearly 700,000 (Mid Year Population Estimates, 2013). In addition, the Oxfordshire area has a Working Age Population of over 430,000. The Working Age Population of the wider region is over 5.5 million.
- Over 205,000 (49%) of the resident Working Age Population are qualified to NVQ level 4 (diploma level) and above, which is over 13% higher than the UK proportion (36%) and 10% higher than the proportion for the South East (39.1%), indicating the presence of a considerable pool of highly educated employees.
- In addition to the high availability of employees in professional occupations, Oxfordshire also has 55,200 (16%) of its employee base working in associate professional and technical occupations which is over 2.2% higher than the UK proportion (14%).

**49%**



of the resident **Working Age Population** are qualified to degree level and above which is over **13%** higher than the UK proportion



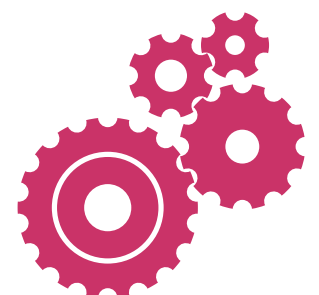
Oxfordshire has **110,000 PEOPLE EMPLOYED** in professional occupations

**Almost 11%** higher than the UK proportion

**Economic Activity Rate (16-64), ONS 2014**

	Oxfordshire No.	Oxfordshire %	England %
Economic activity rate - aged 16-64	344,100	81.1	78.3

Source: Midyear Population Estimates, ONS



# Sites & Premises

Oxfordshire has a wide range of cost effective commercial properties together with available sites for Design and Build, including a 92 hectare Enterprise Zone.

**£22.00**  
per sq. ft.  
**AVERAGE**  
Grade A  
office rental

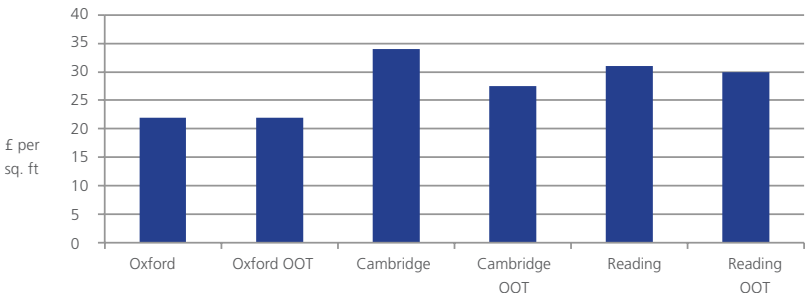


**- 35 %**  
lower when  
compared to  
Cambridge

- Oxfordshire has a range of high quality commercial, business and science parks as well as serviced offices. The average office rental per sq. ft. (Grade A) is £22.00 for both Oxford City Centre and for Out of Town (OOT) locations. The average rental per sq. ft is considerably less compared to other locations. It is 35% less than Cambridge and 29% less than Reading.
- Science and technology parks include Oxford Science Park, Grove Technology Park and Begbroke Science Park. The latter houses the mathematics, physics and life sciences faculties of the University of Oxford. It also has a number of facilities available to businesses such as cleanrooms and is also home to the Advanced Research Computing (ARC) resource for researchers.
- Banbury, to the north of Oxford, has two business parks (Banbury Business Park and Central M40) located close to Junction 11 of the M40. These provide new existing space from 10,000 sq. ft., as well as design and build opportunities. There is also a business park in Oxford.
- The Science Vale Oxford Enterprise Zone is a 92 hectare site to the south of Oxford that comprises parts of Harwell campus and MEPC Milton Park. The latter is a science and business park in Abingdon which provides office, laboratory space and light industrial premises. The success of Milton Park has led to further expansion, with up to 370,000 sq. ft. (34,374 sq. m.) of new, high quality commercial office and research space to be developed. In addition, Harwell campus is also an expanding site, with 470,000 sq. ft. (43,664 sq. m.) of new commercial space planned for future development. The campus master plan also includes enhanced leisure, hotel and amenity space.
- The Enterprise Zone can potentially offer occupiers a number of benefits including a business rate discount worth up to £275,000 over five years, as well as support for superfast broadband.

- Inward investors will benefit from close proximity to innovative tech led start-ups operating in the digital space. There are several facilities either in existence or in development to help grow such companies. There are also co-working hub spaces available to companies operating in the creative and digital sector.

Average Grade A Office Rentals, Collier International, 2014



# Connectivity

Oxfordshire has outstanding transport infrastructure; with excellent motorway and railway access to the UK's main cities – London is just one hour 30 minutes drive away.



**Distances and Drive Times from Locations in Oxfordshire to Selected Cities**

Location	Oxford	Banbury
Birmingham	80 miles 129 km 1hr 50mins	52 miles 83 km 1hr 5min
Cambridge	106 miles 107 km 2hr 30 mins	86 miles 138 km 2 hr 10mins
London	60 miles 97 km 1hr 30mins	78 miles 126 km 2hr 10mins
Manchester	161 miles 259 km 3hr 30mins	135 miles 217 km 2hr 50mins
Bristol	85 miles 137 km 1hr 50mins	79 miles 127 km 2hr

From Oxfordshire, key UK cities are easily and efficiently accessible by motorway: London and Birmingham in one hour 30 minutes and Manchester in under three hours





Oxfordshire is within quick and easy access to key UK international airports; Heathrow and Birmingham are accessible by road in one hour and Gatwick in two hours.

With its excellent motorway, rail and airport links, Oxfordshire is an ideal location from which to access national and international clients and markets

### Superfast Broadband

Businesses based in Oxfordshire can benefit from access to superfast broadband, with over 90% of Oxfordshire able to access broadband at a minimum of 24Mb/s. SuperConnected Oxford is a programme to enable superfast broadband access for everyone and everywhere in Oxford. Wifi Hotspots are being created as part of an extensive Wifi zone around the city.

### Distances from locations in Oxfordshire to Selected Airports

Airport	Oxford	Banbury
Heathrow	47 miles 76 km 1hr	65 miles 105 km 2hrs
Gatwick	85 miles 136 km 2hrs	102 miles 164 km 2hrs 30mins
Birmingham	66 miles 106 km 1hr 30mins	40 miles 64 km 1hr





# Business Support

A comprehensive service to support companies in establishing their operations locally

**Invest in Oxfordshire** provides a comprehensive package of support to assist companies in establishing their new operation in the area as well as providing on-going support. The range of support provided by the Inward Investment team includes:

- Co-ordination and identification of commercial premises and property viewings
- Facilitation of introductions to the University of Oxford and Oxford Brookes University
- Introduction to other research facilities, including the Science & Technology Facilities Council
- Connecting businesses with professional service providers, signposting to business support organisations and sector specific networks, as well as Network Navigators
- Assistance in recruitment of new staff, such as graduate recruitment and training support including apprenticeships
- Supporting the relocation of employees and their families moving into the area
- Provision of ongoing aftercare to Oxfordshire based companies

There is a wide range of support for businesses operating across the digital spectrum. This includes amongst others the following:

- **Digital Media and Publishing Network Navigator.** The Network Navigator facilitates business partnerships and alliances across entrepreneurs, SMEs and large companies as well as research institutes. The Network Navigator can also facilitate introductions to the relevant research institutes in Oxfordshire and offer advice on relevant funding schemes available, both nationally and locally.
- **Digital Oxford** is an initiative created to raise the profile of the digital sector and to highlight the digital skills and expertise within Oxfordshire.
- Other networking and support organisations and events include Oxford Technology and Media Network (which involves over 300 senior industry figures to collaborate and promote Oxfordshire internationally), Oxford Entrepreneurs, Venturefestoxford.com, Opus (the Oxford Publishing Society which has over 2,000 members), Oxford Publishing and Digital Media (OPDM) and Oxford Geek Nights.

For more information contact:



✉ [invest@investinoxfordshire.com](mailto:invest@investinoxfordshire.com)

🌐 [www.investinoxfordshire.com](http://www.investinoxfordshire.com)

🐦 @InvestInOxon

# Our Priorities



## people

Deliver and attract specialist and flexible skills at all levels, across all sectors, as required by our businesses, with full, inclusive employment and fulfilling jobs.



## place

Provide the quality environment and choice of homes needed to support growth and capitalise upon the exceptional quality of life, vibrant economy and the dynamic urban and rural communities of our county.



## enterprise

Encourage innovation led growth, underpinned by Oxfordshire's strengths in University research and development, business collaboration and supply chain potential.



## connectivity

Allow people to move freely, connect easily and provide the services, environment and facilities needed by a dynamic, growing and dispersed economy.

If you require this document in any other format, please contact [info@oxfordshirelep.com](mailto:info@oxfordshirelep.com).



[info@oxfordshirelep.com](mailto:info@oxfordshirelep.com)  
[www.oxfordshirelep.com](http://www.oxfordshirelep.com)