



# OXLEP

driving economic growth



# Oxfordshire

**Oxfordshire is a global brand, known worldwide for its academic excellence and historical significance with a diverse economic base.**

Oxfordshire's potential is huge; it is in an excellent location, close to London, with transport links enabling connectivity throughout the country. Oxfordshire forms one apex of the UK's "Golden Triangle" of innovation intensive economic potential with Cambridge and London – a knowledge rich cluster set to rival its few world competitors.



# Partners

OxLEP's partnership of public, private, higher and further education has set a strong strategic approach building on our region's priorities for investment, infrastructure and business support.

Our partners are committed to working on a collaborative basis to deliver the unified vision for Oxfordshire's economy.



# Priorities



people

Deliver and attract specialist and flexible skills at all levels, across all sectors, as required by our businesses, with full, inclusive employment and fulfilling jobs.



place

Provide the quality environment and choice of homes needed to support growth and capitalise upon the exceptional quality of life, vibrant economy and the dynamic urban and rural communities of our county.



enterprise

Encourage innovation led growth, underpinned by Oxfordshire's strengths in University research and development, business collaboration and supply chain potential.



connectivity

Allow people to move freely, connect easily and provide the services, environment and facilities needed by a dynamic, growing and dispersed economy.



# People

## OxLEP's People priorities are to:

- Build on the strong base of skills, knowledge and experience across Oxfordshire and create further jobs
- Develop a strategy to retain our business and graduate talent and increase funding to support Science Technology Engineering and Mathematics (STEM)
- Deliver more Apprenticeships with a focus on our priority growth sectors
- Maximise our environment to encourage sustainable living, enhancing the quality of life and range of opportunities



# Place

## OxLEP's Place priorities are to:

- Accelerate the delivery of new homes across the county
- Ensure housing is accessible and affordable for those already in and wanting to locate to Oxfordshire
- Deliver flagship gateway developments and projects that deliver growth
- Support Oxfordshire's Flood Management Strategy



# Enterprise

## OxLEP's Enterprise priorities are to:

- Achieve a more balanced economy through fostering a dynamic private sector and new business starts-ups
- Capitalise on the global reputation of Oxfordshire's knowledge base translating academic and research excellence into wealth generation
- Fulfil our potential as an internationally renowned business, academic and research centre to attract new investment
- Increase our business base and the number of businesses that trade internationally whilst growing Oxfordshire's world class technology clusters





# Connectivity

## OxLEP's Connectivity priorities are to:

- Deliver an integrated transport improvement programme across Oxfordshire offering new and direct strategic transport
- Increase capacity and improve efficiency and resilience of our local transport network, reducing congestion and managing future accessibility
- Maximise the opportunity for greater investment in broadband connectivity
- Improve connectivity between people and the natural environment, developing sustainable transport routes linking communities, economic centres and the natural environment



# Strategy

**Enjoying an already successful economy, Oxfordshire operates in a globally competitive arena and OxLEP's aim is to create the conditions that make the county the location of choice for the world's leading science and technology businesses.**

Crucial to maximising this potential is creating investor confidence and committing to ensure that our networks and infrastructure are fit for purpose; building on Oxfordshire's natural advantage as a world leading centre of knowledge and innovation.

Our programme for growth will deliver:

- New jobs, better skills and additional Apprenticeships
- Accelerated delivery of county wide new homes
- Better connectivity between communities and work places with improved transport infrastructure
- Quality inward investment
- Better connectivity and investment in broadband
- Growth in Oxfordshire's green economy
- More private sector investment
- Gross Value Added uplift



# Strategic Economic Plan

**OxLEP prepared a Strategic Economic Plan (SEP) for the county that was adopted and submitted to Government in March 2014. Our SEP sets out ambition to 2030 – to drive innovation and accelerated economic growth to meet the needs of our science and knowledge rich economy, placing Oxfordshire at the forefront of the UK's global growth ambitions.**

OxLEP is refreshing the SEP for Oxfordshire which will be published in late 2016.

**A copy of the Strategic Economic Plan is available to download at [www.oxfordshirelep.com](http://www.oxfordshirelep.com)**

The SEP seeks to ensure the county is recognised as:

- A vibrant place where ambitious businesses and people thrive; and where aspiring young people choose to build their careers and lives
- Being environmentally, socially and economically sustainable
- A world leading, dynamic innovation system; founded on world class research and fuelled by enterprise
- A place where all residents and businesses have a real stake in determining and contributing to the county's future economic narrative



# Strategic Environmental and Economic Investment Plan for Oxfordshire

**The Oxfordshire Strategic Environmental Economic Investment Plan (SEEIP) provides direction and clarity on how investment in Oxfordshire's environment will be delivered. It is one of a series of investment plans that sits under the SEP and delivers its ambitions for the county's economic growth up to 2030.**

The priorities for the SEEIP are:

- Growing the green economy in Oxfordshire, including farming, forestry, low carbon energy and environmental research and services
- Promoting and enabling access to Oxfordshire's countryside, the River Thames and its tributaries to attract and benefit residents, businesses and visitors

- Improving management of land in the Thames River Basin catchment; for example to reduce flood risk, enhance water resources and promote biodiversity
- Improving the setting of new and existing development and heritage assets by investing in strategic green infrastructure, including public open space, habitats, sustainable drainage systems, and walking and cycling connections
- Engaging people in their environment and encouraging more sustainable lifestyles

**A copy of the Strategic Environmental and Economic Investment Plan for Oxfordshire is available to download at [www.oxfordshirelep.com](http://www.oxfordshirelep.com)**



# Creative, Culture, Heritage and Tourism Investment Plan for Oxfordshire

The Oxfordshire Creative, Culture, Heritage and Tourism Investment Plan (CCHTIP) aims to develop a clear vision and purpose that will strengthen and exploit investment opportunities within these industries. This will enhance the current offer in Oxfordshire and create sustainable growth and prosperity throughout the county.

A copy of the Creative, Culture, Heritage and Tourism Investment Plan is available to download at [www.oxfordshirelep.com](http://www.oxfordshirelep.com)

The priorities for the CCHTIP are:

- To review and summarise the current state of the local economy under each theme
- To understand and highlight catalysts for, and barriers to, the future growth of the creative, culture, heritage and tourism sectors in the county
- To make the economic case for investment within each sector which has the potential to promote growth
- To highlight specific opportunities for investment and innovation in Oxfordshire



# Innovation Strategy

**OxLEP's Innovation Strategy will better understand, increase and make use of innovation across Oxfordshire; aiming to sustain and grow the county's economy and support the development of innovative businesses.**

**A copy of the Innovation Strategy will be published late 2016 and will be available to download at [www.oxfordshirelep.com](http://www.oxfordshirelep.com)**

The strategy builds on the elements and processes required for innovation, focusing on the following key themes:

- Understanding the ecosystem
- Strengthening our networks
- Building innovation spaces
- Reinforcing the science and research base for innovation
- Innovation for all
- Attracting talent and developing skills, capital and business
- Smart City
- Embedding innovation in the ecosystem



# Skills Strategy

Oxfordshire's Skills Strategy builds on the work of the Oxfordshire Skills Board which has been working to transform the skills landscape across the county.

OxLEP are refreshing the Skills Strategy which will be published late 2016.

A copy of the current Skills Strategy is available to download at [www.oxfordshirelep.com](http://www.oxfordshirelep.com)

The Skills Strategy supports:

- A workforce that is aligned to employers' needs
- A flexible and responsive training and educational sector
- An integrated and seamless coordination of services for young people
- Greater alignment between young people, providers and employers





# Funding

## City Deal

Oxford City and Oxfordshire have been awarded “City Deal” status by the Government. This means greater spending powers at a local level and substantially increased funding for critical areas of the county’s economy.

### This funding is contributing to:

- Supporting a local responsive skills system
- Accelerating the delivery of 7,500 new homes by 2018
- Developing four Innovation Hubs across the county
- Supporting projects such as the Northern Gateway, Science Transit and access to the Enterprise Zone

## Local Growth Fund

Oxfordshire’s Local Growth Fund (LGF) shapes the future and enables growth across the county by focusing limited Government resources on areas of greatest economic impact.

### This funding contributes to:

- Technology and Innovation Centres
- The Western Conveyance Channel/Flood Storage system
- The Centre for Applied Superconductivity
- Local Transport Board agreed allocation
- The local infrastructure scheme

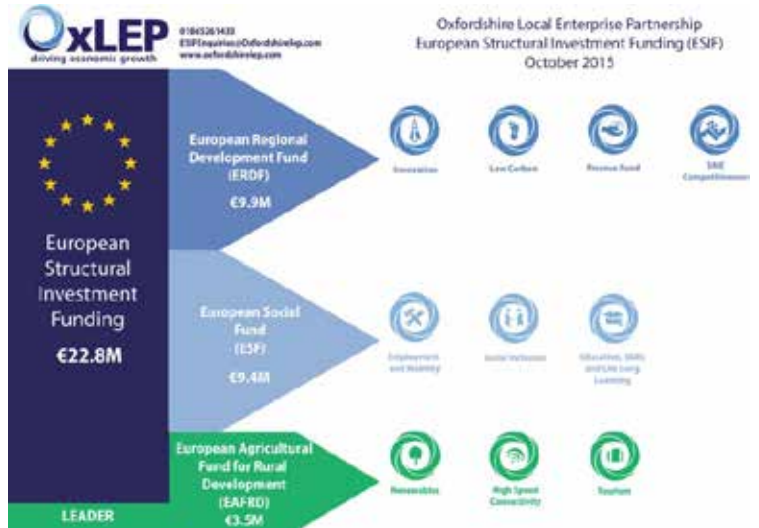




## European Funding

Oxfordshire has received an allocation of European Structural Investment Funds (ESIF) for the period 2014 to 2020. The ESIF plan sets out the overarching priorities for Oxfordshire and OxLEP is working with its partners to deliver the desired outcomes.

**This European Structural Investment Funds plan is available to download at [www.oxfordshirelep.com](http://www.oxfordshirelep.com)**







**An inward investment service which provides confidential and tailored assistance to place and grow businesses within Oxfordshire.**

Five key sectors for investment opportunities have been identified for Oxfordshire:

- Automotive and Motorsport
- Creative and Digital
- Electronics and Sensors
- Life Sciences
- Space Technologies

**Please visit [www.investinoxfordshire.com](http://www.investinoxfordshire.com) for further information.**

Invest in Oxfordshire aims to:

- Provide a free, confidential inward investment service
- Support new companies moving into Oxfordshire
- Help existing companies grow





**An impartial information and advice service for businesses interested in employing Apprentices and those considering an Apprenticeship for themselves or someone they know.**

**Please visit [www.oxfordshireapprenticeships.co.uk](http://www.oxfordshireapprenticeships.co.uk) for further information.**

Oxfordshire Apprenticeships aims to:

- Build a skilled and effective workforce through support for young people and increased Apprenticeship opportunities
- Raise awareness of the benefits of Apprenticeships and local opportunities by working closely with schools, employers, training organisations and communities
- Bring Apprenticeships to life through a network of Apprenticeship Ambassadors from a range of sectors and locations





**Opportunities to Inspire (O2i) provided in collaboration with Oxfordshire Skills Board and Oxfordshire County Council, was launched in 2014 and is a “One Stop Shop” for education business links across the county.**

**Please visit [www.O2i.org](http://www.O2i.org) for further information**

O2i aims to:

- Provide Enterprise Advisors who are experienced business people acting as ambassadors to work strategically with schools and colleges
- Connect schools to the knowledge, expertise and experience of volunteers from business
- Inspire young people to realise their potential and set ambitions for the world of work





**A service that supports schools, colleges and employers with work experience in Oxfordshire.**

**Please visit [www.oxfordshireworkexperience.org](http://www.oxfordshireworkexperience.org) for further information**

Oxfordshire Work Experience aims to:

- Provide an extensive work experience support offer for schools and colleges
- Make it as easy as possible for employers to get involved with work experience
- Give young people the knowledge, skills and experience that will enable them to make good training and career choices



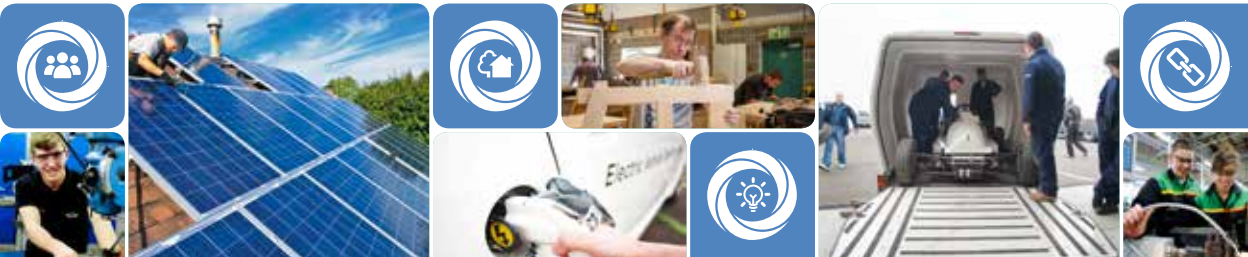


**A strategic Board that brings together a wide range of public and private employers, secondary, further and higher education skills providers and stakeholder groups.**

**Please visit [www.oxfordshireskillsboard.org](http://www.oxfordshireskillsboard.org) for further information**

Oxfordshire Skills Board aims to:

- Better understand the skills needs and priorities across Oxfordshire
- Strengthen links between business and providers of learning
- Improve skills and business support provision to employers







**oxfordshirelep.com**



**info@oxfordshirelep.com**



**OxfordshireLEP**



**01865 261433**



If you require this document in any other format, please contact  
info@oxfordshirelep.com or telephone 01865 261433

